

# BUILDING MORE GRACIOUS AND HARMONIOUS COMMUNITIES: FACILITATING EFFECTIVE RESOLUTION OF NEIGHBOUR DISPUTES

## ANNEX B

### How the Noise Sensors would be used

Figures 1 and 2 below illustrate the types of charts that can be produced from the sensors and that only processed data will be retained.

Figure 1: Types of Charts produced

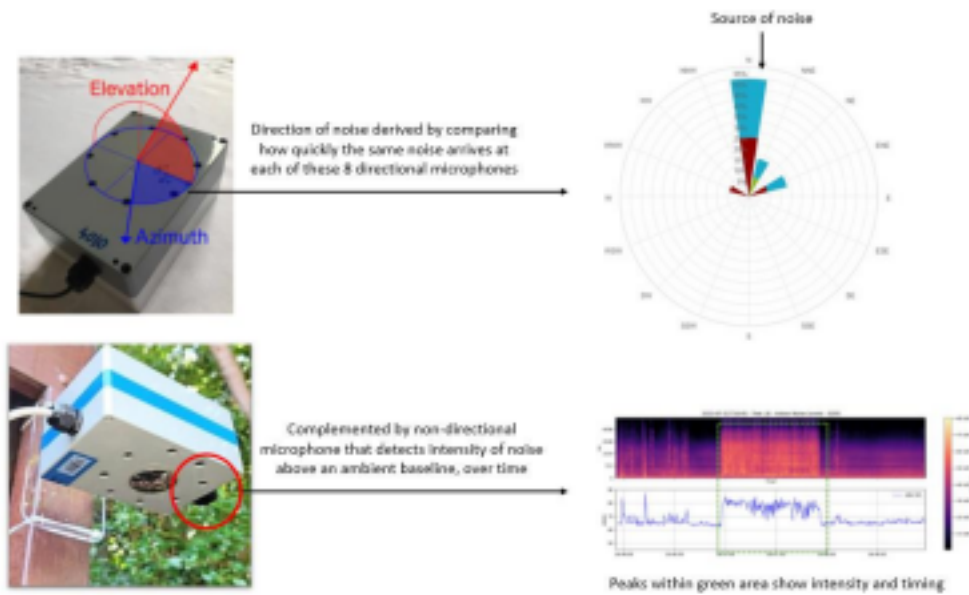
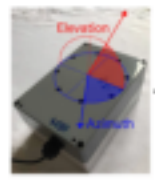
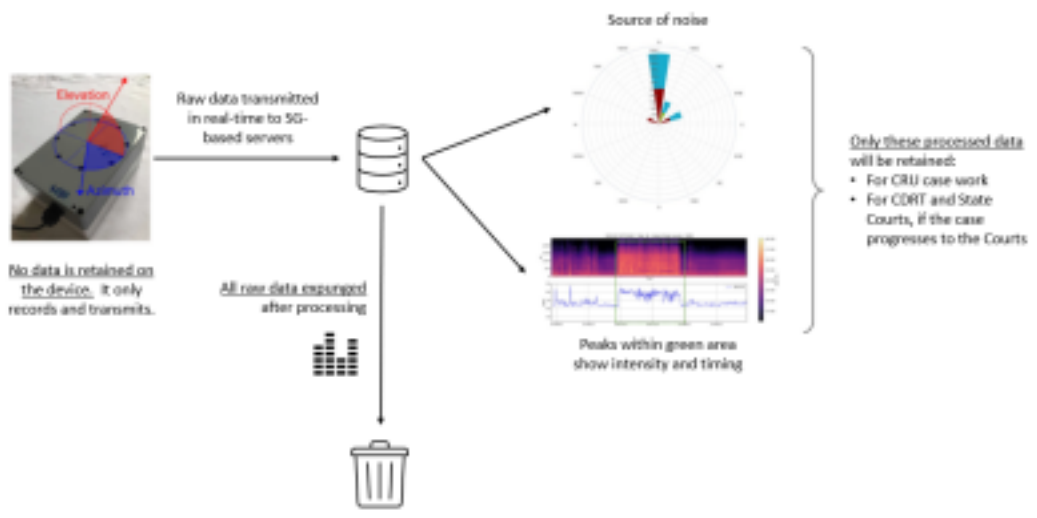


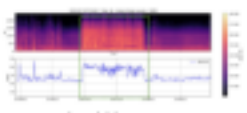
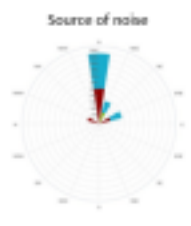
Figure 2: Sensor data management



Raw data transmitted in real-time to 5G-based servers

No data is retained on the device, it only records and transmits.

All raw data encrypted after processing



Peaks within green area show intensity and timing

Only these processed data will be retained:

- For CRJ case work
- For CDRT and State Courts, if the case progresses to the Courts

